

| | | | |
|---|---|--|------------------------|
|  | INSPECTION REPORT Pre-Shipment Inspection | | Report No. :H-XXXXXXXX |
| | | | |

| INSPECTION INFORMATION | | | |
|------------------------|---------------------|----------------|--------------------------------|
| Client | XXXX | | |
| Supplier | XXXX | | |
| Factory | XXXX | | |
| Inspection Instruction | GWI-S-002-HQT | | |
| P.O. No. | 00011 | P.O. Quantity | 12000PAIRS |
| Item No. | S4AUML011 | Sampling Plan | ISO2859:Single; Normal |
| Inspection Date | XXXX | Sampling Level | G-II |
| Inspection Location | XXXX | Sample Size | 315PAIRS |
| Inspection Sequence | Original inspection | AQL | Critical:0,Major:2.5,Minor:4.0 |
| Product description | SANDAL FLAT CLOSED | | |



| INSPECTION RESULT SUMMARY | | | |
|--|---------|-------------|---------|
| Category | Conform | Not Conform | Pending |
| 1.Quantity | × | | |
| 2.Workmanship | | × | |
| 3.Style, Color & Documentation | | | × |
| 4.Field Test & Measurement | | | × |
| 5.Shipping Mark & Packaging | × | | |
| OVERALL CONCLUSION NOT CONFORM to client's requirement | | | |

| | |
|------------------------------|--|
| Approved by HQTS Supervisor: | |
|------------------------------|--|

This report reflects the facts as recorded by HQTS at the time and place of inspection. It does not relieve the manufacturers from their contractual obligations nor prejudice client's right for compensation for any apparent and/or hidden defects not detected during our random inspection or occurring thereafter.

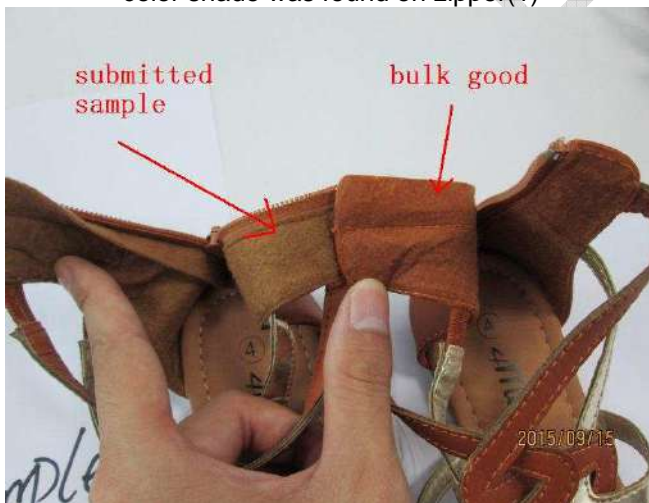
| SPECIAL ATTENTION POINT (SAP) | | |
|-------------------------------|--|--|
| 1 | Quantity | NIL |
| 2 | Workmanship | NIL |
| 3 | Style, Color & Documentation | Please refer to the following findings |
| 3.1 | For all color, color shade was found on zipper/lining/thread between submitted sample and bulk goods, (The silver lining color on Teal was confirmed to submitted picture on PO). Details refer to photos. | |
| 3.2 | For all color among 4 shoes size, discrepancy was found on outsole between right and left shoes within one pairs, details refer to photos. | |
| 3.3 | For tan color check, color shade was found on outsole between submitted sample and bulk goods, details refer to photos. | |
| 3.4 | For teal color check, color shade was found on vamp between submitted sample and bulk goods, details refer to photos. | |



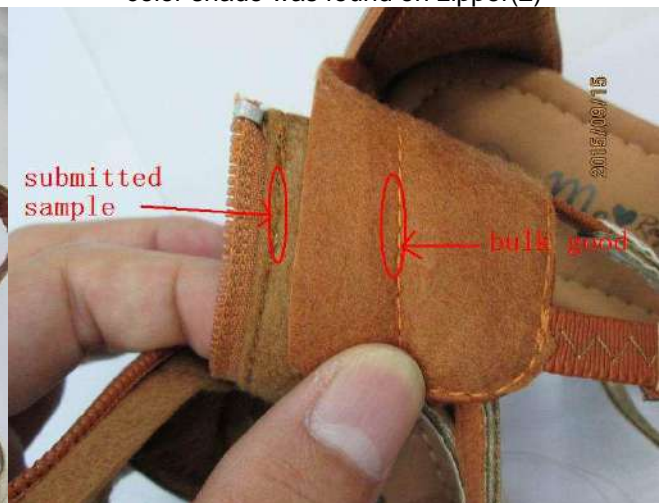
color shade was found on zipper(1)



color shade was found on zipper(2)



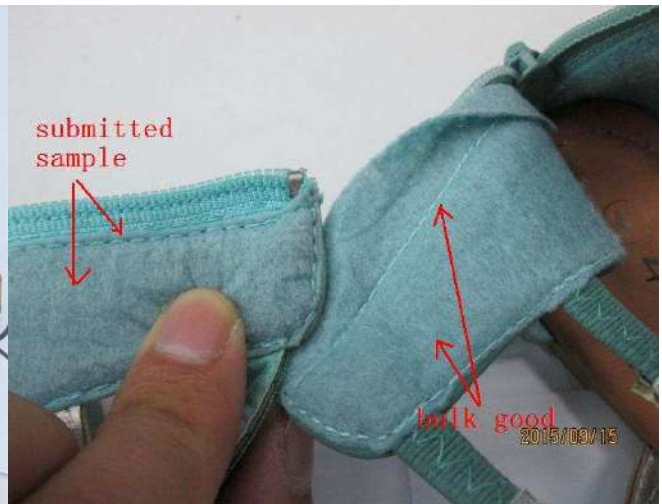
color shade was found on thread(1)



color shade was found on thread(2)



color shade was found on thread(3)



color shade was found on thread(4)



color shade was found on thread(5)



color shade was found on thread(6)



all color 4 shoes size-discrepancy was found on outsole between right and left shoes within one pairs(1)



all color 4 shoes size-discrepancy was found on outsole between right and left shoes within one pairs(2)1



tan color-color shade was found on outsole(1)



tan color-color shade was found on outsole(2)



teal color-color shade was found on vamp(1)



teal color-color shade was found on vamp(2)



teal color-color shade was found on vamp(3)

| | | |
|-----|---|--|
| 4 | Field Test & Measurement | Please refer to the following findings |
| 4.1 | Some data which mark with red were out of specification, details refer to data sheet. | |
| 5 | Shipping Mark & Packaging | NIL |

| INSPECTION DETAILS | | | | | | | | |
|--------------------|-----------|----------|--------------|----------|----------------|----------|-------------|----------|
| 1.Quantity | | | | | Conform | | | |
| P.O. No. | Item No. | P.O. Qty | Shipment Qty | | Packed Qty | | Sample Size | |
| | | (Pair) | (Pair) | (Carton) | (Pair) | (Carton) | (Pair) | (Carton) |
| 00011 | S4AUML011 | 12000 | 12000 | 800 | 12000 | 800 | 315 | 28 |
| Total | | 12000 | 12000 | 800 | 12000 | 800 | 315 | 28 |

| 2.Workmanship | | Not Conform | | |
|--|--|--------------------|-------|-------|
| Defects Description | | Critical | Major | Minor |
| - Broken skin on insole | | | 4 | |
| - Obvious glue mark on back counter | | | 2 | |
| - Obvious poor gluing between insole and outsole | | | 2 | |
| - Obvious glue mark on outsole | | | 1 | |
| - Obvious oil mark on back counter | | | 1 | |
| - Glue mark on vamp | | | | 9 |
| - Slight poor gluing between insole and outsole | | | | 6 |
| - Uncut thread ends on vamp | | | | 3 |
| - Slight slant assembly between insole and outsole | | | | 2 |
| - Impurity mark on insole | | | | 1 |
| - White mark on outsole | | | | 1 |
| - Oil mark on back counter | | | | 1 |
| Total Found: | | 0 | 10 | 23 |
| Allowed: | | 0 | 14 | 21 |

The following field test included in workmanship check

| | |
|----|---------------------------------|
| 1) | Labeling check |
| 2) | Pull check with normal force |
| 3) | Adhered force with normal force |

Defect Photos



defect-broken skin on insole-ma(1)



defect-broken skin on insole-ma(2)



defect-broken skin on insole-ma(3)



defect-broken skin on insole-ma(4)



defect-obvious glue mark on back counter-ma(1)



defect-obvious glue mark on back counter-ma(2)



defect-obvious poor gluing between insole and outsole-ma(1)



defect-obvious poor gluing between insole and outsole-ma(2)



defect-obvious glue mark on outsole-ma



defect-obvious oil mark on back counter-ma



defect-glue mark on vamp-mi(1)



defect-glue mark on vamp-mi(2)



defect-glue mark on vamp-mi(3)



defect-glue mark on vamp-mi(4)



defect-glue mark on vamp-mi(5)



defect-slight poor gluing between insole and outsole-mi(1)



defect-slight poor gluing between insole and outsole-mi(2)



defect-slight poor gluing between insole and outsole-mi(3)



defect-slight poor gluing between insole and outsole-mi(4)



defect-uncut thread ends on vamp-mi(1)



defect-uncut thread ends on vamp-mi(2)



defect-uncut thread ends on vamp-mi(3)



defect-slight slant assembly between insole and outsole-mi(1)



defect-slight slant assembly between insole and outsole-mi(2)



defect-impurity mark on insole-mi



defect-white mark on outsole-mi



defect-oil mark on back counter-mi

| 3.Style, Color & Documentation | Pending | | |
|--|---------|-------------|---------|
| DESCRIPTION | Conform | Not Conform | Pending |
| The inspected samples were consistent with | - | - | - |
| Purchase Order | X | | |
| Product Specification | | | X |
| Submitted sample | | | X |
| Client's comment verification | - | - | - |
| PLEASE MAKE SURE THE BOW IS SECURE AND WILL NOT FALL OFF | X | | |
| THE LINING ON THE TEAL WILL BE SILVER | X | | |

| 4.Field Test | | | | Pending | | |
|--------------|---------------------------|---------------|-----------------------|---------|-------------|---------|
| Item | | Specification | Sample Size | Conform | Not Conform | Pending |
| 1) | Smell check | | 5 Samples | X | | |
| 2) | Barcode readability check | | 5 Samples | X | | |
| 3) | Rub test | | 5 Samples | X | | |
| 4) | Tape test | | 5 Samples | X | | |
| 5) | Carton dimension check | | 1 Carton | X | | |
| 6) | Carton gross weight check | | 1 Carton | X | | |
| 7) | Wearing check | | 2 Samples | X | | |
| 8) | Flexing check | | 2 Samples | X | | |
| 9) | Zipper life check | | 2 Samples | X | | |
| 10) | Gift box size check | | 2 Samples | | | X |
| 11) | Size measurement check | insole length | 3 Samples/Size | X | | |
| 12) | Assortment check | | 100% Selected cartons | X | | |

Measured Data was listed as below table:

| Item no. | Packing carton | Dimension of Carton (cm) (±5%) | | | | Weight of carton (kg) (±10%) | | | | | | | |
|-----------------------------------|----------------|--------------------------------|----|----------------|-----|------------------------------|----|--------|-----------------------------------|----|----|----|------|
| | | Specification | | Actual | | Specification | | Actual | | | | | |
| S4AUML011 | 15 | 52x37.5x30 | | 52.0x37.5x30.0 | | 14.3LBS=6.5kg | | 7.1 | | | | | |
| Check item(S4AUML011) | | Specification on PO | | | | Spec on gift box | | | Actual | | | | |
| Dimension of gift box(cm) | | 11.5x28.0x10.0 | | | | - | | | 28.7x12.0x10.0, 28.6x12.1x10.0 | | | | |
| Size Measurement Chart(S4AUML011) | | | | | | | | | | | | | |
| Measurement | SZ | 3 | | | SZ | 4 | | | SZ | 5 | | | TOL |
| Point (mm) | CL | TA | TE | TE | CL | TE | TE | TA | CL | TE | TA | TE | |
| Insole length | 233 | - | - | +1 | 238 | +1 | - | +1 | 245 | - | - | - | 0,+5 |
| Measurement | SZ | 6 | | | SZ | 7 | | | SZ | 8 | | | TOL |
| Point (mm) | CL | TA | TE | TE | CL | TE | TE | TA | CL | TA | TA | TE | |
| Insole length | 252 | - | +1 | - | 258 | +1 | - | - | 264 | - | +1 | +1 | 0,+5 |

| | | |
|--|-----------|----------------|
| 5.Shipping Mark & Packaging | | Conform |
| 1) Shipping mark photos | | |
| Main mark | Side mark | |



| 6.Reference Note | | | | | | | | | | |
|------------------|--|-----|-----|-----|----|-----|-----|-----|-----|-----|
| 1) | Carton numbers selected for sampling were as below: | | | | | | | | | |
| 2) | Total 4 inspected cartons were sealed with "HQTS" sticker and carton numbers were: 135, 79, 276, 301. | | | | | | | | | |
| 3) | Manufacturer did not allow us to draw any production sample for reference. | | | | | | | | | |
| 4) | The check item weight is conducted by using the testing appliance without calibration which was provided by the factory. | | | | | | | | | |
| 5) | The submitted sample was provided by factory. | | | | | | | | | |
| Item no | Carton number | | | | | | | | | |
| S4AUML011 | 12 | 117 | 160 | 193 | 29 | 135 | 79 | 295 | 311 | 385 |
| | 212 | 278 | 10 | 234 | | | | | | |
| | 364 | 367 | 319 | 50 | 40 | 276 | 301 | 128 | 175 | 177 |
| | 204 | 248 | 94 | 358 | | | | | | |

7.Photos



item S4AUMLO11



item S4AUMLO11



item S4AUMLO11



item S4AUMLO11



item S4AUMLO11



item S4AUMLO11



item S4AUML011



item S4AUML011



item S4AUML011



item S4AUML011



item S4AUML011



item S4AUML011



item S4AUML011



item S4AUML011



item S4AUML011



item S4AUML011



item S4AUML011



item S4AUML011



item S4AUML011



item S4AUML011



item S4AUML011



item S4AUML011



item S4AUML011



item S4AUML011



item S4AUML011



item S4AUML011



item S4AUML011



item S4AUML011



item S4AUML011



item S4AUML011



item S4AUML011



item S4AUML011



item S4AUML011



item S4AUML011



item S4AUML011



item S4AUML011(54)



repacked carton(1)



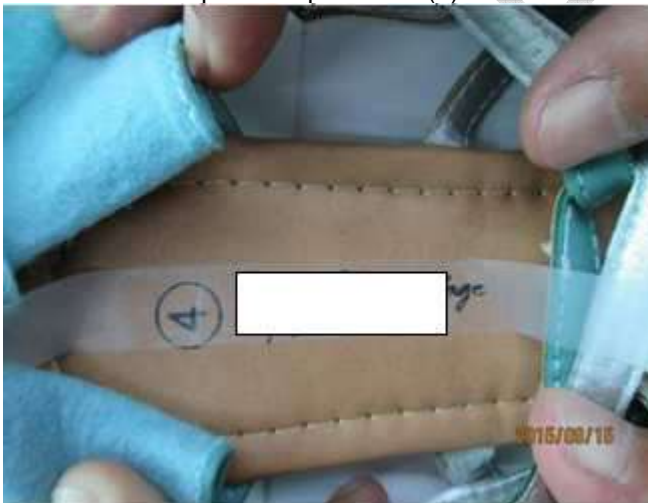
repacked carton(2)



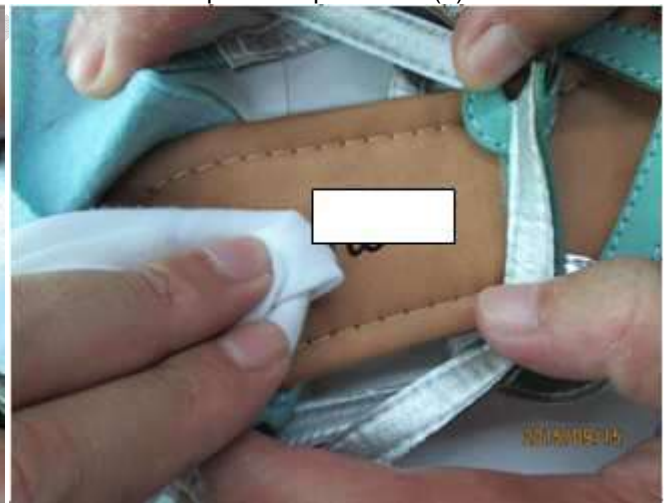
pick and pull check(1)



pick and pull check(2)



tape test



rub test

| | | | |
|------------|-----|----------|-----|
| Inspector: | 782 | Auditor: | 404 |
|------------|-----|----------|-----|

End of Report